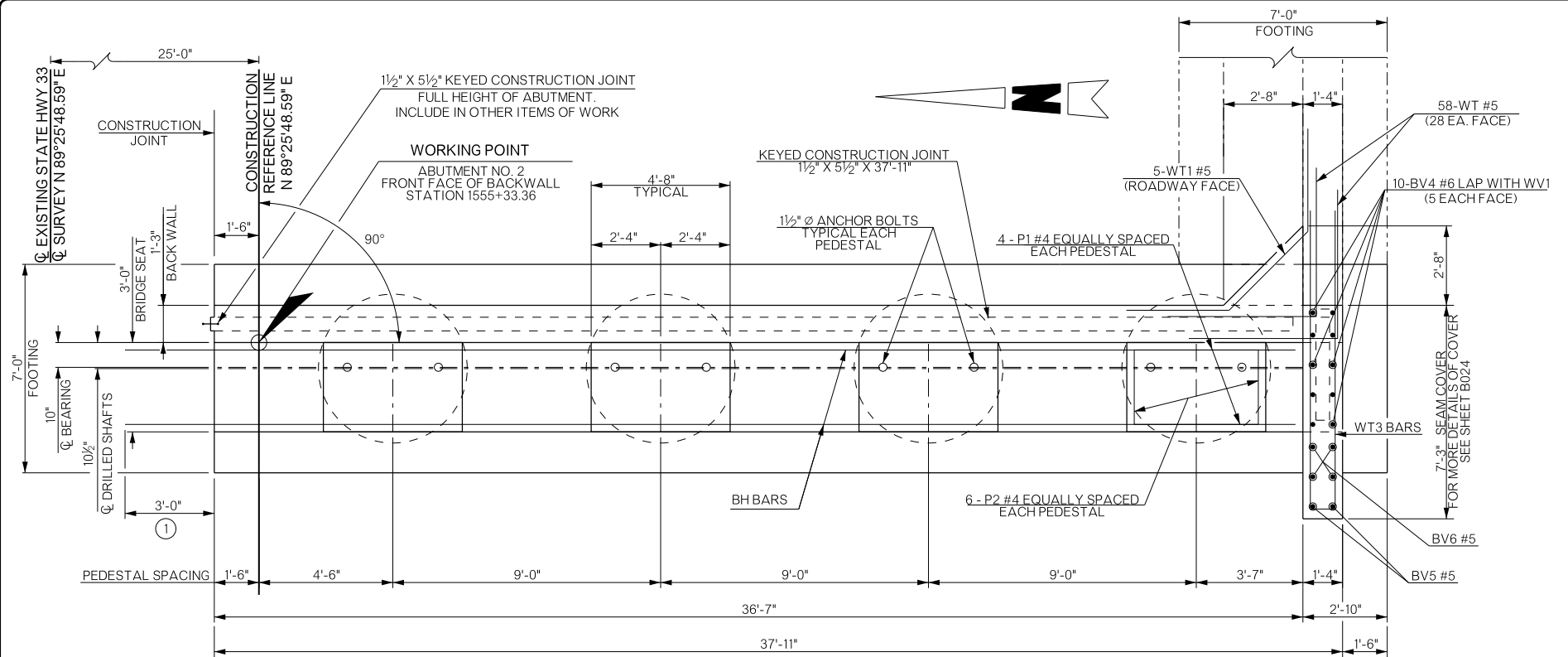
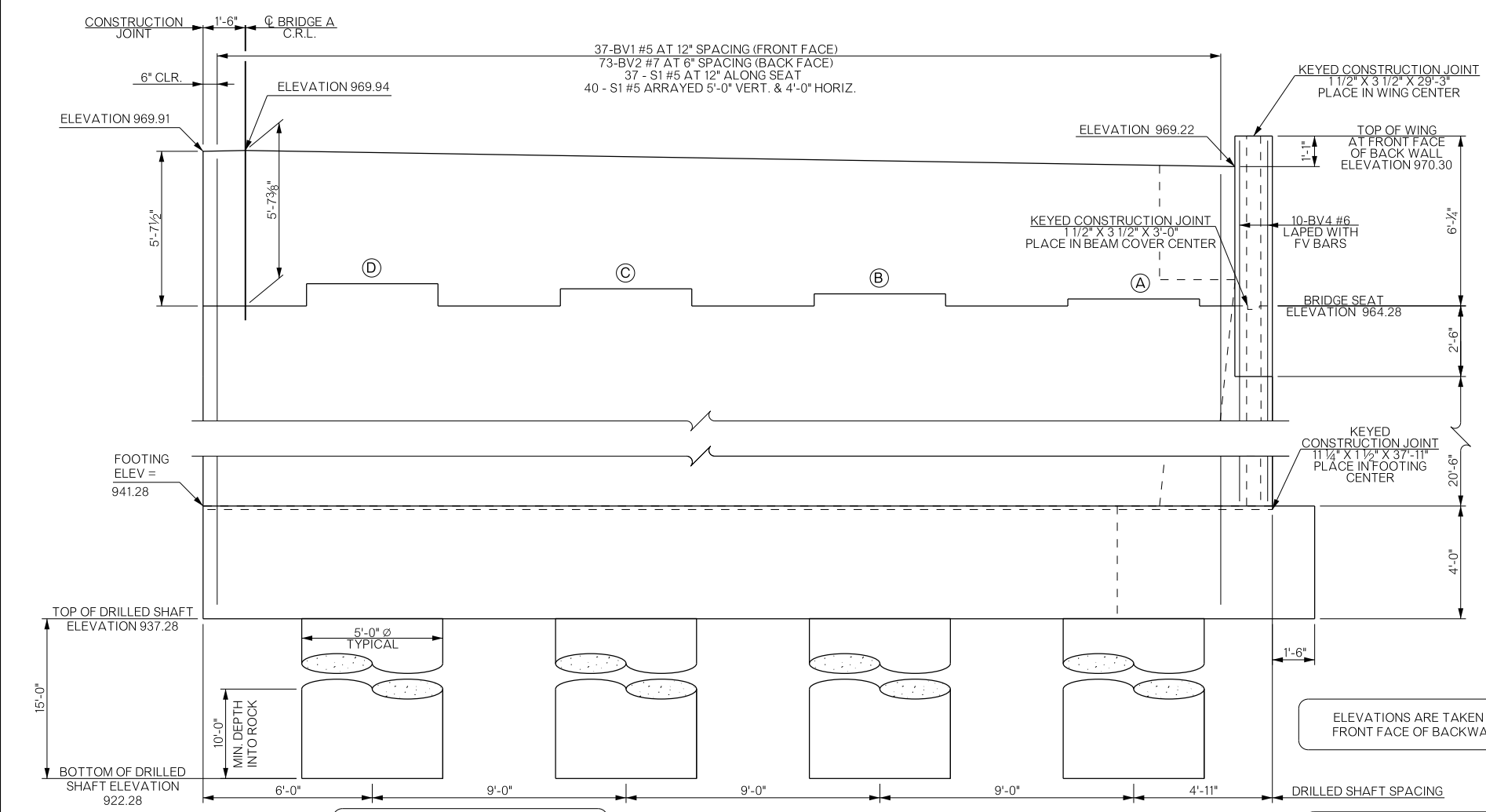


| REVISIONS |             |      |
|-----------|-------------|------|
| REV. NO.  | DESCRIPTION | DATE |
|           |             |      |



**PHASE I PLAN**



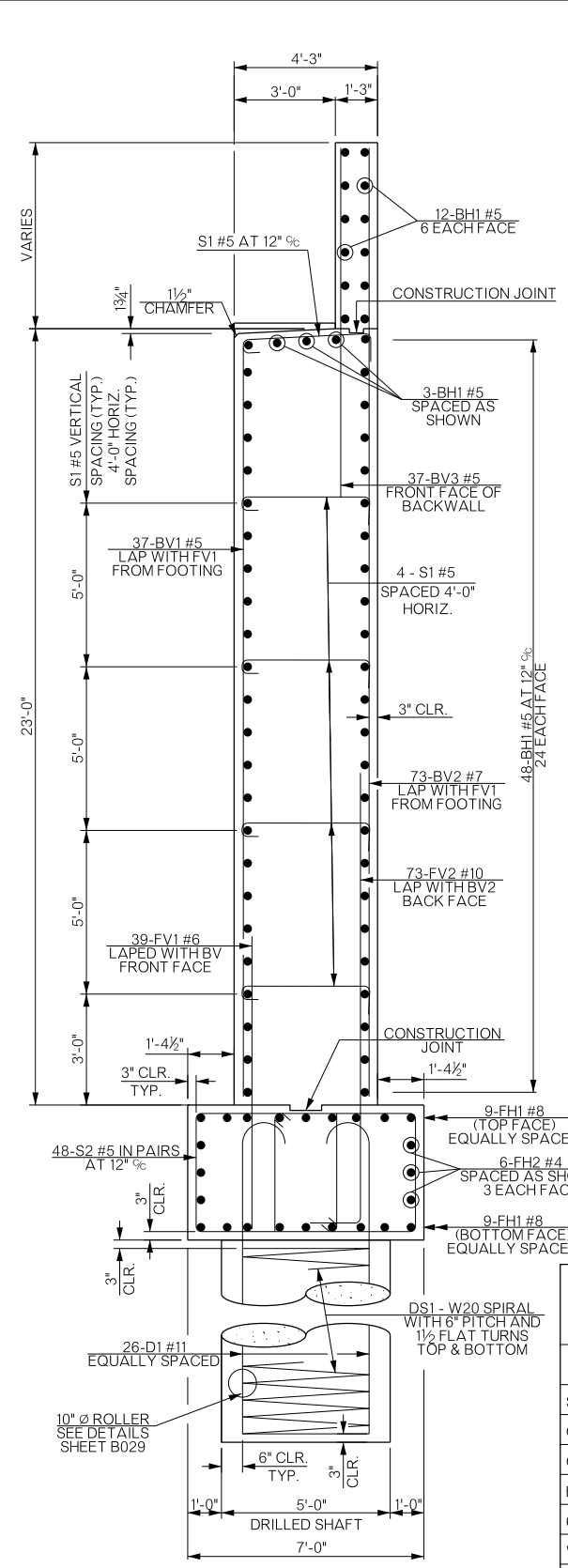
**PHASE I ELEVATION**

FOR DETAILS OF AESTHETIC TREATMENTS SEE SHEETS NO. B045, B046

FOR STEEL LAYOUT, SIZE AND PLACEMENT; SEE SHEET B024

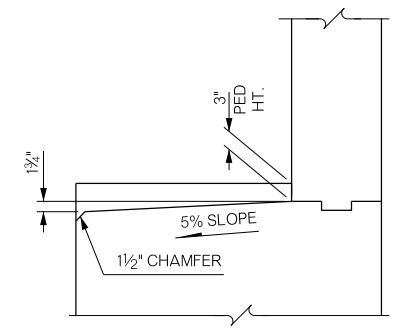
FOR BAR BENDS NOT SHOWN SEE SHEETS NO. B025, B029

ELEVATIONS ARE TAKEN AT FRONT FACE OF BACKWALL.



**PHASE ONE TYPICAL SECTION**

PLACE ALL WT WING REINFORCING TIED TO ABUTMENT SEAT AND BACKWALL REINFORCING BEFORE PLACING ABUTMENT SEAT AND BACKWALL CONCRETE. FOR ADDITIONAL DETAILS, SEE DETAILS OF WINGS, SHEET NO. B025.



**SEAT ELEVATION DETAIL**

① 3'-0\"/>

| MARK | HEIGHT | ABUTMENT 2 ELEVATION |
|------|--------|----------------------|
| A    | 3"     | 964.53               |
| B    | 5 1/4" | 964.71               |
| C    | 7 1/4" | 964.89               |
| D    | 9 1/2" | 965.08               |

| ITEM                                 | UNIT | QUANTITY |
|--------------------------------------|------|----------|
| SUBSTRUCTURE EXCAVATION COMMON       | CY   | 380.0    |
| CLSM BACKFILL                        | CY   | 853.6    |
| CLASS A CONCRETE                     | CY   | 280.5    |
| EPOXY COATED REINFORCING STEEL       | LB   | 29,430.0 |
| 60" DRILLED SHAFT                    | LF   | 105.0    |
| WATER REPELLENT (VISUALLY INSPECTED) | SY   | 126.0    |
| 6" PERFORATED PIPE UNDERDRAIN ROUND  | LF   | 34.0     |

BRIDGE "A" SH-33 OVER COTTONWOOD CREEK LOGAN COUNTY

DETAILS OF ABUTMENT NO. 2 (SHEET 2 OF 8)

|        |           |       |
|--------|-----------|-------|
| Design | GT        | 11/15 |
| Detail | MAP       | 11/15 |
| Check  |           |       |
| Squad  | PEARSON   |       |
| Engr.  | HERNANDEZ |       |

STATE OF OKLAHOMA DEPARTMENT OF TRANSPORTATION

JOB/PECE NO. 21860(04) SHEET NO. B023